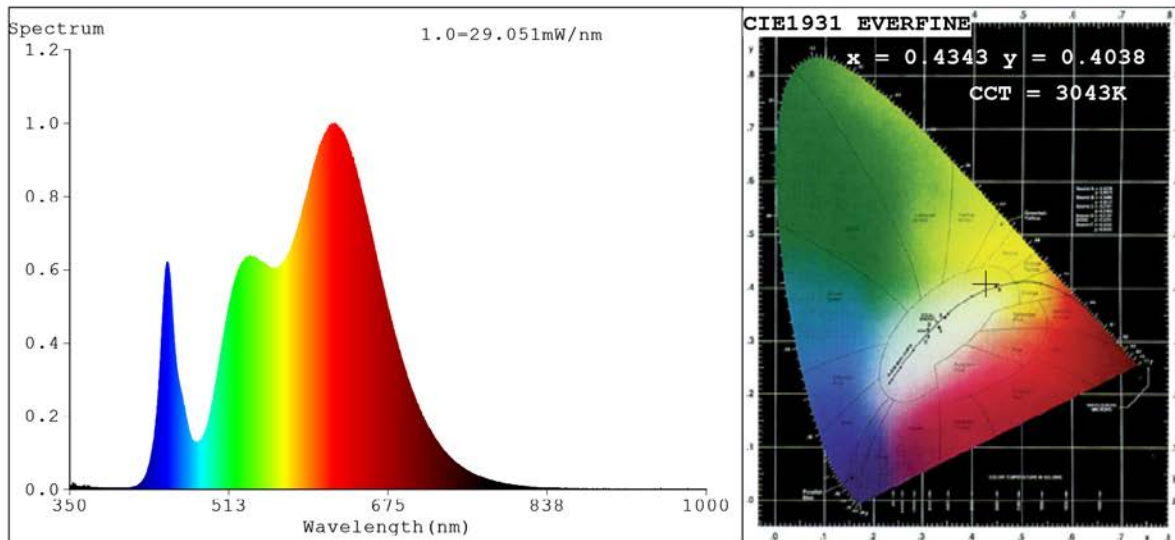


Spectrum Test Report



Color Parameters:

Chromaticity Coordinate: $x=0.4343$ $y=0.4038$ $u'=0.2490$ $v'=0.5209$
 CCT=3043K (Duv=0.0003) Dominant WL:Ld =582.5nm Purity=51.6%
 Ratio:R=24.9% G=72.9% B=2.2%;;Peak WL:Lp=621.0nm FWHM=162.2nm
 Render Index:Ra=94.4 CRI=91.0 TM30:Rf=91 Rg=103
 R1 =98 R2 =96 R3 =91 R4 =94 R5 =97 R6 =95 R7 =95
 R8 =89 R9 =70 R10=88 R11=91 R12=78 R13=98 R14=94 R15=94

Photo Parameters:

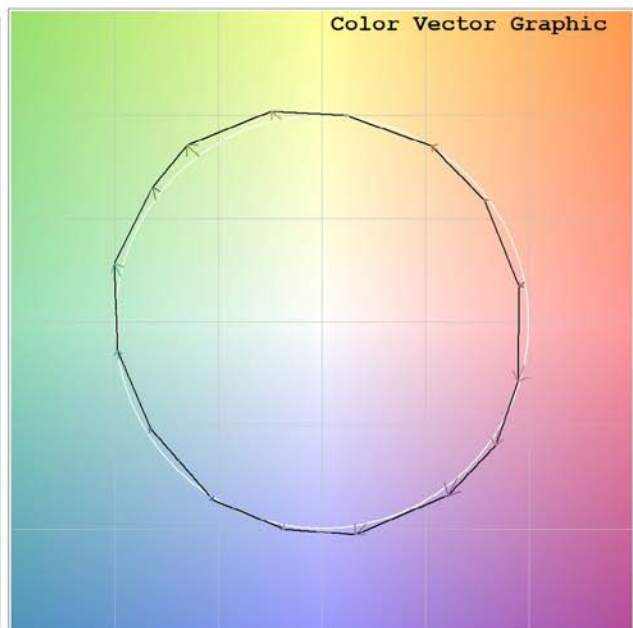
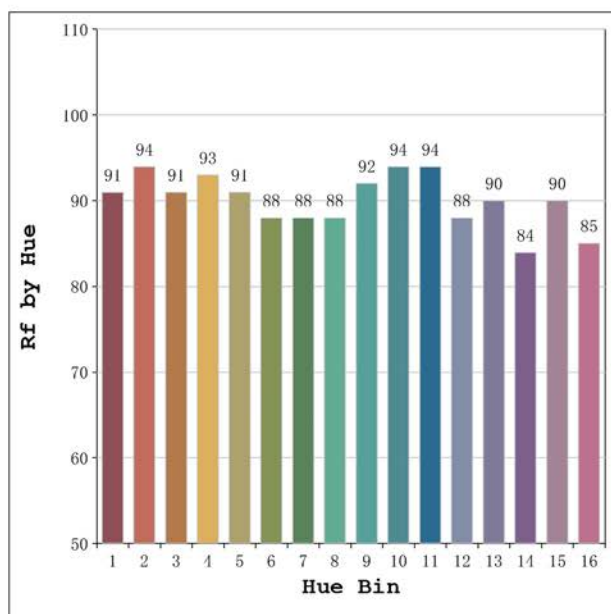
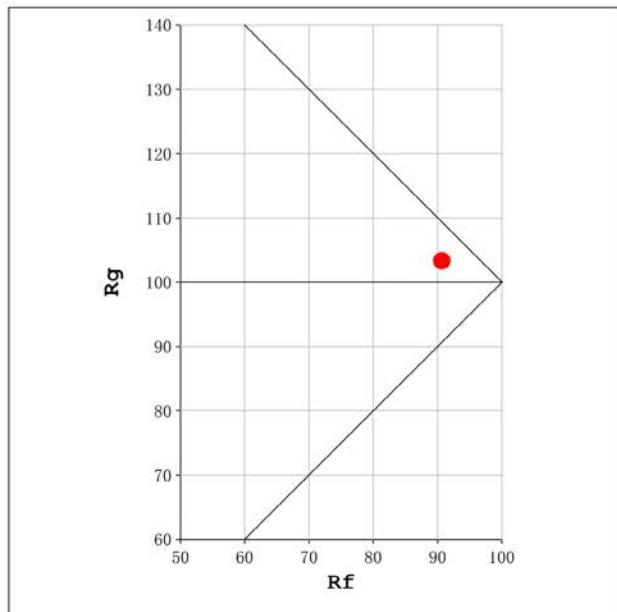
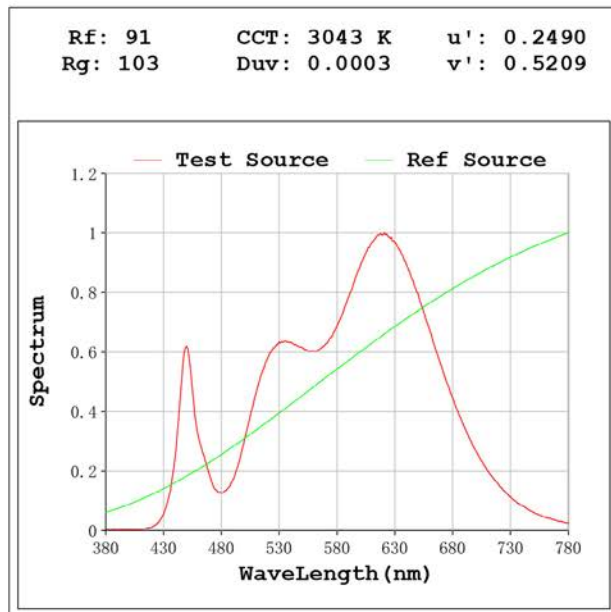
Flux = 1465 lm Eff. : 94.57 lm/W Fe = 5.007 W

Electrical parameters:

V = 23.998 V I = 0.6454 A P = 15.49 W PF = 1.000

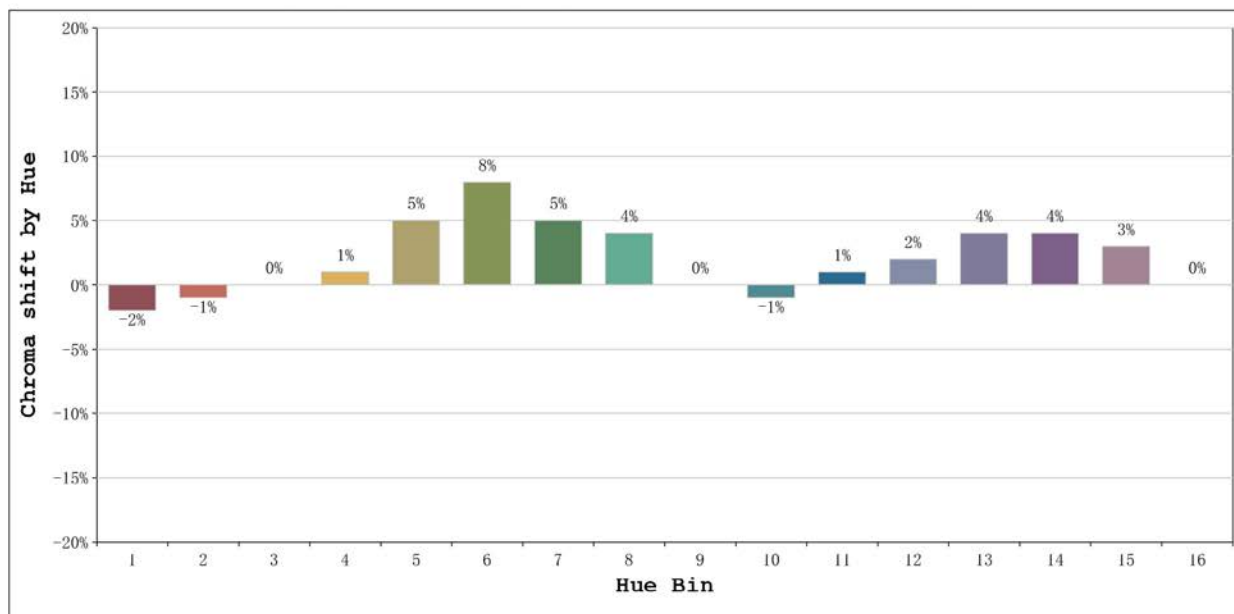
Status: Integral T = 831 ms Ip = 50064 (76%)

Model:Ecoled Élite 15 Gold 3000	Number: 31.173
Tester:Sergio Carneros	Date:2025-02-12 15:02:07
Temperature:20Deg	Humidity:50%
Manufacturer:Luz Negra	Remarks:100cm de tira flexible



Model:Ecoled Élite 15 Gold 3000
 Tester:Sergio Carneros
 Temperature:20Deg
 Manufacturer:Luz Negra

Number: 31.173
 Date:2025-02-12 15:02:07
 Humidity:50%
 Remarks:100cm de tira flexible



			Graphic shift(%)	
Hue Bin	Hue Angle	Rf	Chroma	Hue
1	0.0° - 22.5°	91	-2	-1
2	22.5° - 45.0°	94	-1	1
3	45.0° - 67.5°	91	0	4
4	67.5° - 90.0°	93	1	2
5	90.0° - 112.5°	91	5	4
6	112.5° - 135.0°	88	8	2
7	135.0° - 157.5°	88	5	-3
8	157.5° - 180.0°	88	4	-4
9	180.0° - 202.5°	92	0	-3
10	202.5° - 225.0°	94	-1	0
11	225.0° - 247.5°	94	1	3
12	247.5° - 270.0°	88	2	3
13	270.0° - 292.5°	90	4	-5
14	292.5° - 315.0°	84	4	-7
15	315.0° - 337.5°	90	3	-5
16	337.5° - 360.0°	85	0	-7

Model:Ecoled Élite 15 Gold 3000	Number: 31.173
Tester:Sergio Carneros	Date:2025-02-12 15:02:07
Temperature:20Deg	Humidity:50%
Manufacturer:Luz Negra	Remarks:100cm de tira flexible